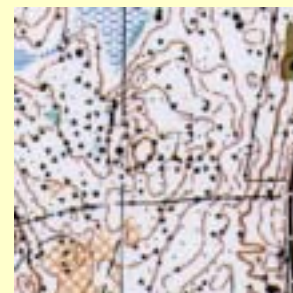
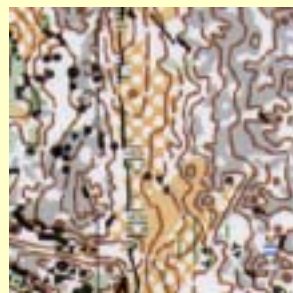
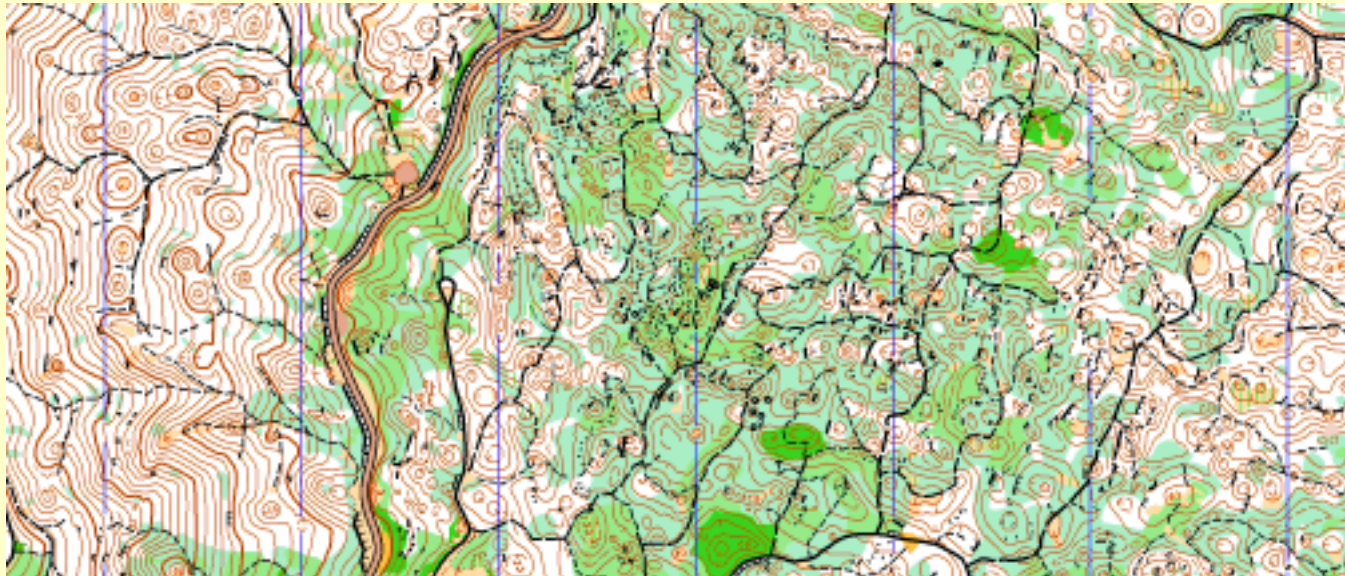


# Maps in IOF events 2001-2002



**László Zentai**  
**Map Commission**  
<http://lazarus.elte.hu/mc>

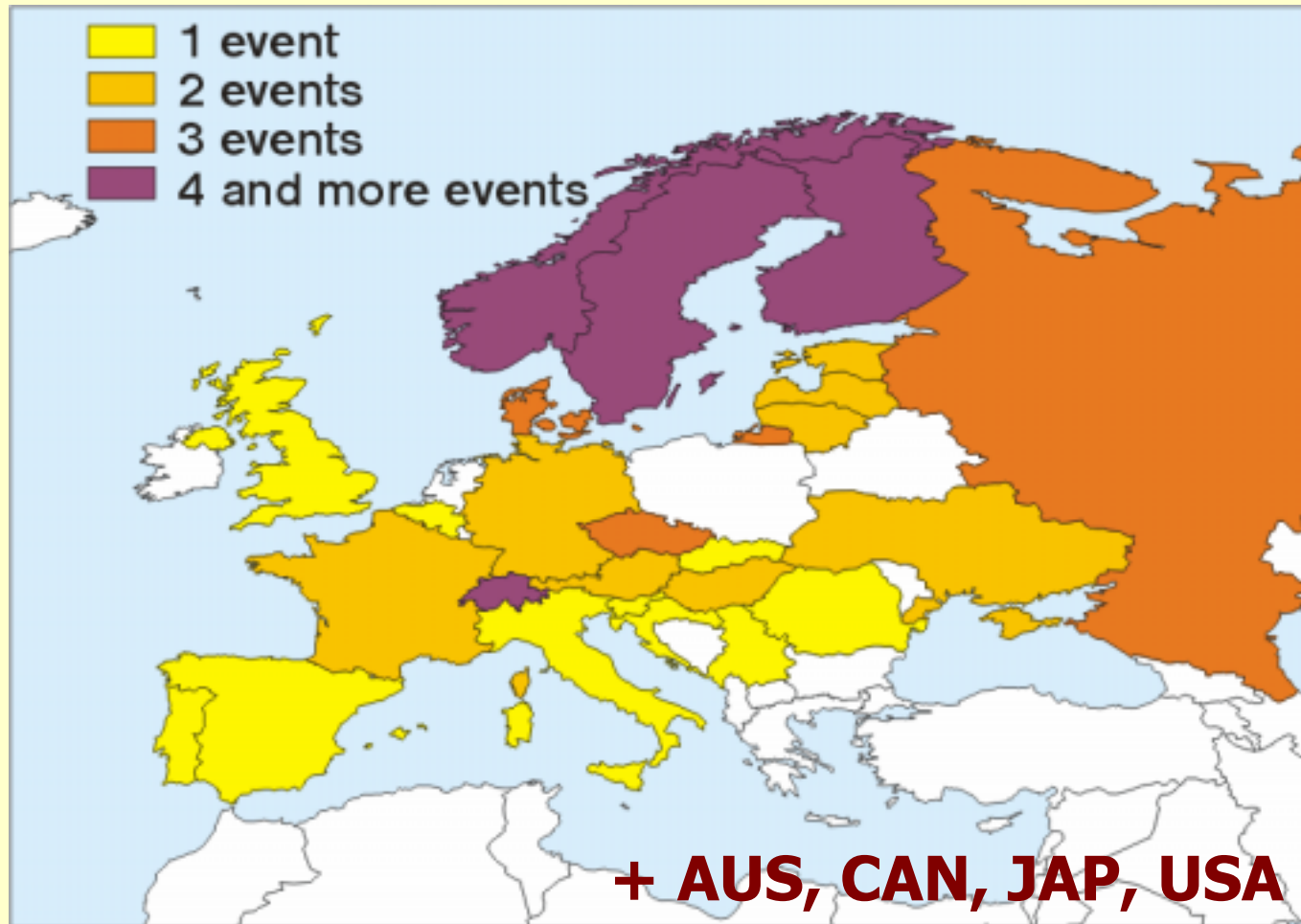
# 2001 (2002): World Ranking Event maps



# 2002: World Cup maps



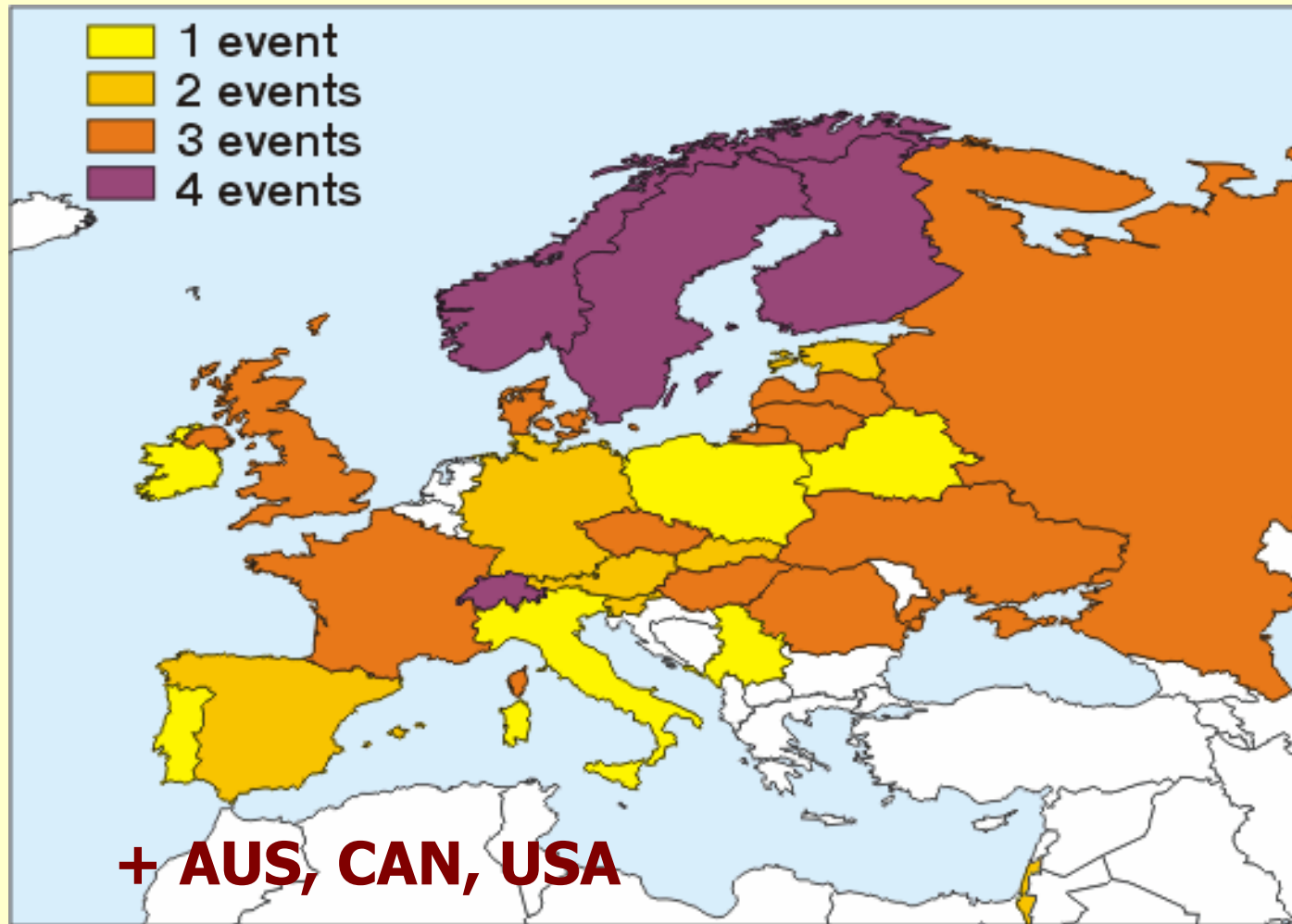
# Distribution of organizers (WRE 2001)



*\*since 2003 each country can organize 3 WREs/year*

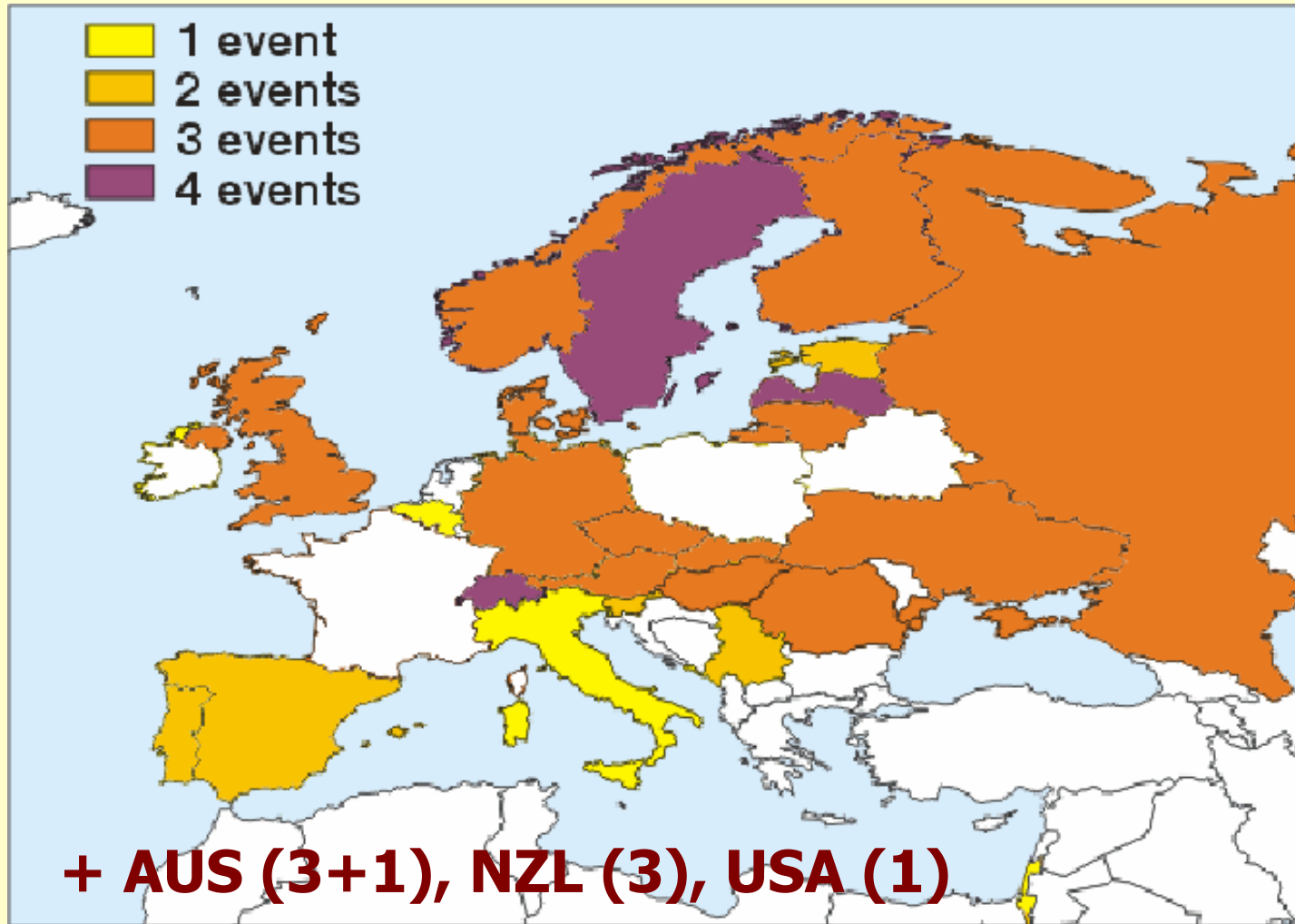


# Distribution of organizers (2002)



*\*since 2003 each country can organize 3 WREs/year*

# Distribution of organizers (2003)



*\*since 2003 each country can organize 3 WREs/year*

# WRE statistics

	<b>2001</b>	<b>2002</b>	<b>2003</b>
<b>Total number of events</b>	<b>67</b>	<b>94</b>	<b>78</b>
<i>Number of organizing countries</i>	<i>29</i>	<i>31</i>	<i>27</i>
<i>Long / classic</i>	<i>48</i>	<i>73 (-12)</i>	<i>55</i>
<i>Middle / short</i>	<i>14</i>	<i>16 (-4)</i>	<i>19</i>
<i>Sprint</i>	<i>2</i>	<i>4 (-4)</i>	<i>3</i>
<i>Other</i>	<i>3</i>	<i>1 (-1)</i>	<i>1</i>
<b>Data success</b>	<b>67 (81%)</b>	<b>58 (62%)</b>	<b>-</b>
<b>1:10 000 scale maps in classic</b>	<b>13 (35%)</b>	<b>3 (9%)</b>	<b>-</b>

# Success – 0%

**Countries without getting any answer in 2001 and no information on the event website in 2002:**

- *France*
- *Russia*

# Success – 100% (2001 and 2002)

Austria (2+2)

Belgium (1+0)

Canada (2+2)

Great Britain (1+2)

Hungary (2+3)

Japan (1+0)

Portugal (1+1)

Slovenia (1+2)

Slovakia (1+2)



# Misuse 1: the scale issue (2001)

**WREs to be organized according to the WOC rules.  
„Maps at 1:10 000 may be produced for relay and  
short distance competitions.“**

**Australia**

**Austria (*contour lines are 0.1 mm instead of 0.21 mm*)**

**Belgium**

**Canada (2-days event on the same map)**

**Croatia**

**Denmark**

**Estonia**

**Great Britain (*contour lines are 0.16 mm instead of 0.21 mm*)**

**Latvia**

**Lithuania**

**Sweden**

**Ukraine**

**Yugoslavia (*contour lines are 0.14 mm instead of 0.21 mm, point symbols were also smaller*)**

## **Misuse 2: the lack of index contours**

**„102 Every fifth contour shall be drawn with a thicker line. „ (ISOM 2000)**

### **Not used:**

**Austria (1) – 1:15 000/5m !!!**

**Belgium (1) – 1:10 000/2.5m (height difference is minimal)**

**Canada (1) – 1:10 000/2.5m (2 events)**

**Denmark (1) – 1:15 000/2.5m**

**Estonia (2) – 1:15 000/2.5m and 1:10 000/2.5m**

**Finland (6) – 1:15 000/5m (3), 1:10 000/5m (2), 1:5000 (1)**

**Sweden (2) – 1:10 000/2.5m and 1:10 000/4m**

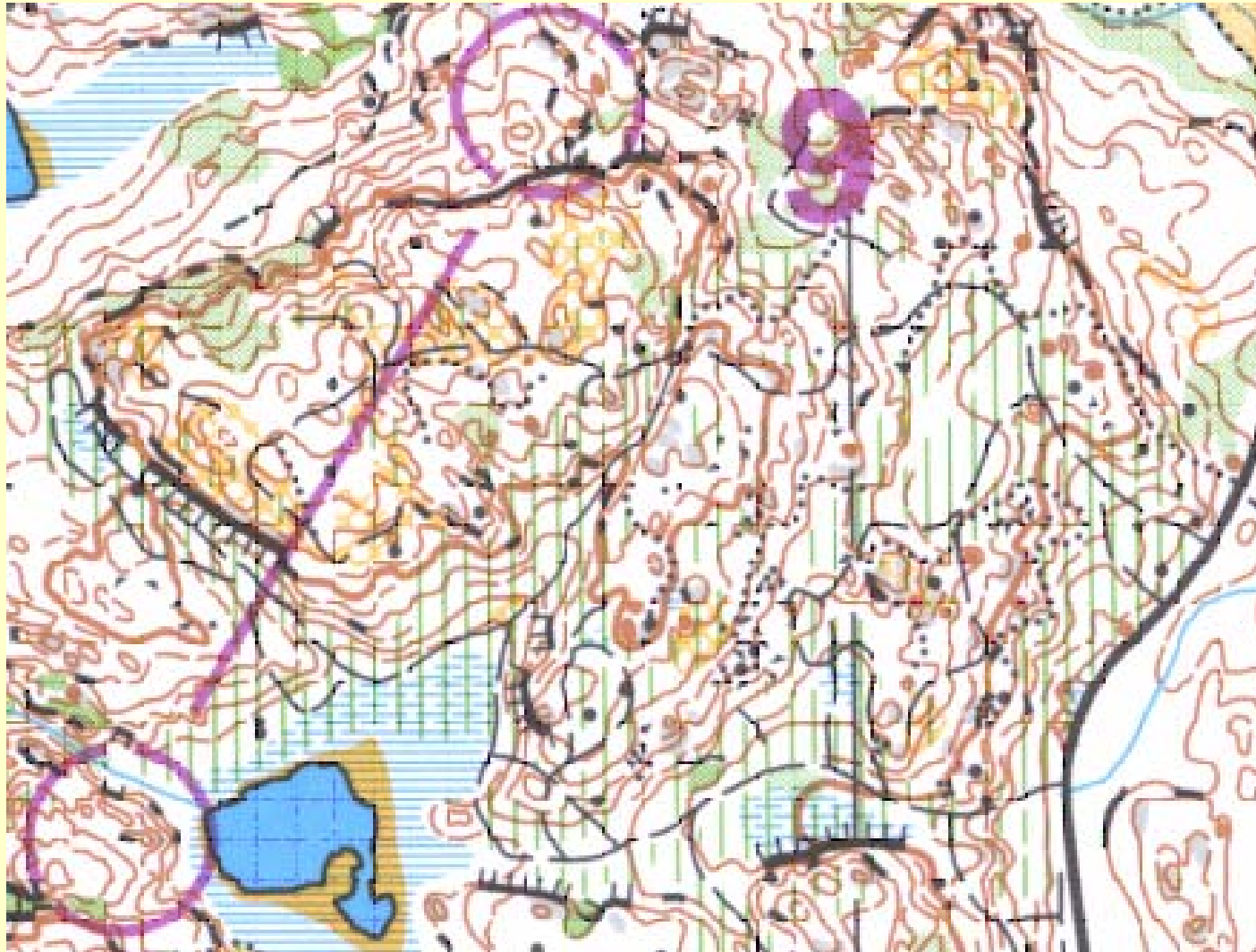
**Ukraine (1) – 1:10 000/2.5m (height difference is minimal)**

# Misuse 3: special signs

**WRE maps must follow ISOM2000, deviations are prohibited**



# Drawing errors



# Printing methods (WRE 2001)

## Offset: 47

- 4 colours: 2 (AUT, UKR)
- 4 colours-FM screen: 2 (DEN)
- **5 colours: 25**
- 6 colours (grey): 7 (AUS, FIN)
- 6 colours (red): 5
- More: 6 (FIN WOC maps)

## Other digital (laser): 4 (AUT, 2EST, ROM)

## Inkjet: 3 (UKR, 2CAN)



# An example of misuse



**1:10000 for classic, wrong magnification, no index contours, wrong colours, wrong size of symbols.**



# World Cup events 2002



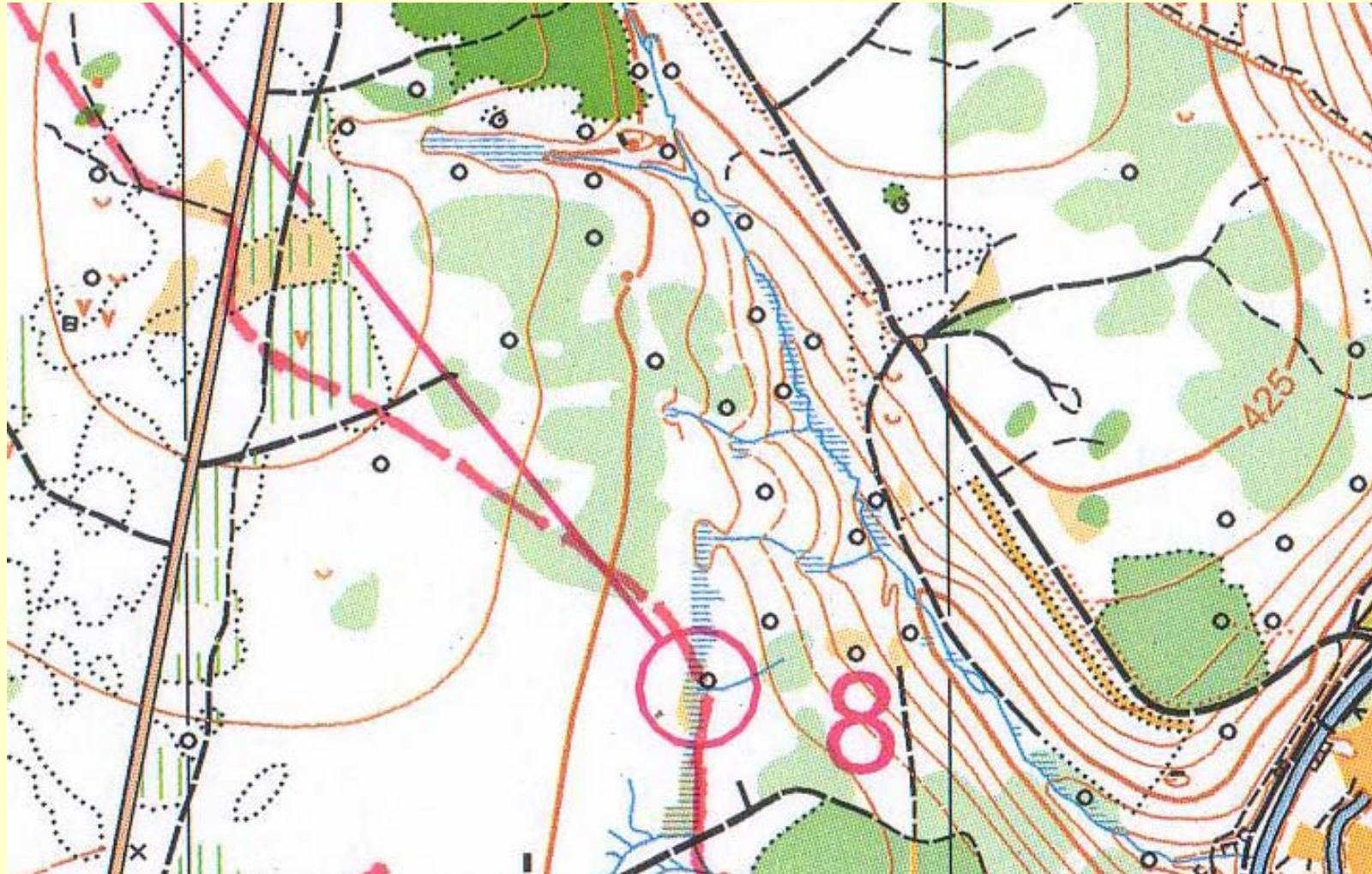
Date	Country	Event name	Map name	Scale	Equid.	Event
2002.06.02	BEL	World Cup 2002 - Event 1 - middle final	La Rocaille	15	5	classic
2002.06.03	BEL	World Cup 2002 - Event 2 - long final	Les Tailis des Prussiens	15	5	classic
2002.06.07	SUI	World Cup 2002 - Event 3	Lausanne-Vidy	4	2,5	sprint
2002.06.08	SUI	World Cup 2002 - Event 4		15	5	relay
2002.06.09	SUI	World Cup 2002 - Event 5		15	5	long
2002.06.30	NOR	World Cup 2002 - Event 6	Roros sentrum	5	5	sprint
2002.07.01	NOR	World Cup 2002 - Event 7	Havern	15	5	long
2002.07.03	NOR	World Cup 2002 - Event 8	Hummelfoten	15	5	relay
2002.07.05	SWE	World Cup 2002 - Event 9	Idre	10	5	middle
2002.07.07	SWE	World Cup 2002 - Event 10	Slättvalen	15	5	ultra-long
2002.09.25	HUN	World Cup 2002 - Event 11 (also EuOC)	Uzsa-Egyesfa-tető	10	5	middle
2002.09.26	HUN	World Cup 2002 - Event 12 (also EuOC)	Kecskévár	15	5	relay
2002.09.28	HUN	World Cup 2002 - Event 13 (also EuOC)	Csöket-hegy (É)	5	5	sprint
2002.09.30	HUN	World Cup 2002 - Event 14 (also EuOC)	Sátor-Magas (Tuskés-hegyek)	15	5	long
2002.10.02	CZE	World Cup 2002 - Event 15	Spilberk	4	5	sprint
2002.10.03	CZE	World Cup 2002 - Event 16	Pohádka máje	15	5	long
2002.10.05	CZE	World Cup 2002 - Event 17	Krtiny	10	5	relay

# World Cup 2002 – 17 events

	<b>1:15 000</b>	<b>1:10 000</b>	<b>1:5000</b> <b>1:4000</b>
<b>Long / classic</b>	<b>6</b>	<b>-</b>	<b>-</b>
<b>Ultra long</b>	<b>1</b>	<b>-</b>	<b>-</b>
<b>Middle</b>	<b>-</b>	<b>2</b>	<b>-</b>
<b>Relay</b>	<b>3</b>	<b>1</b>	<b>-</b>
<b>Sprint</b>	<b>-</b>	<b>-</b>	<b>4</b>

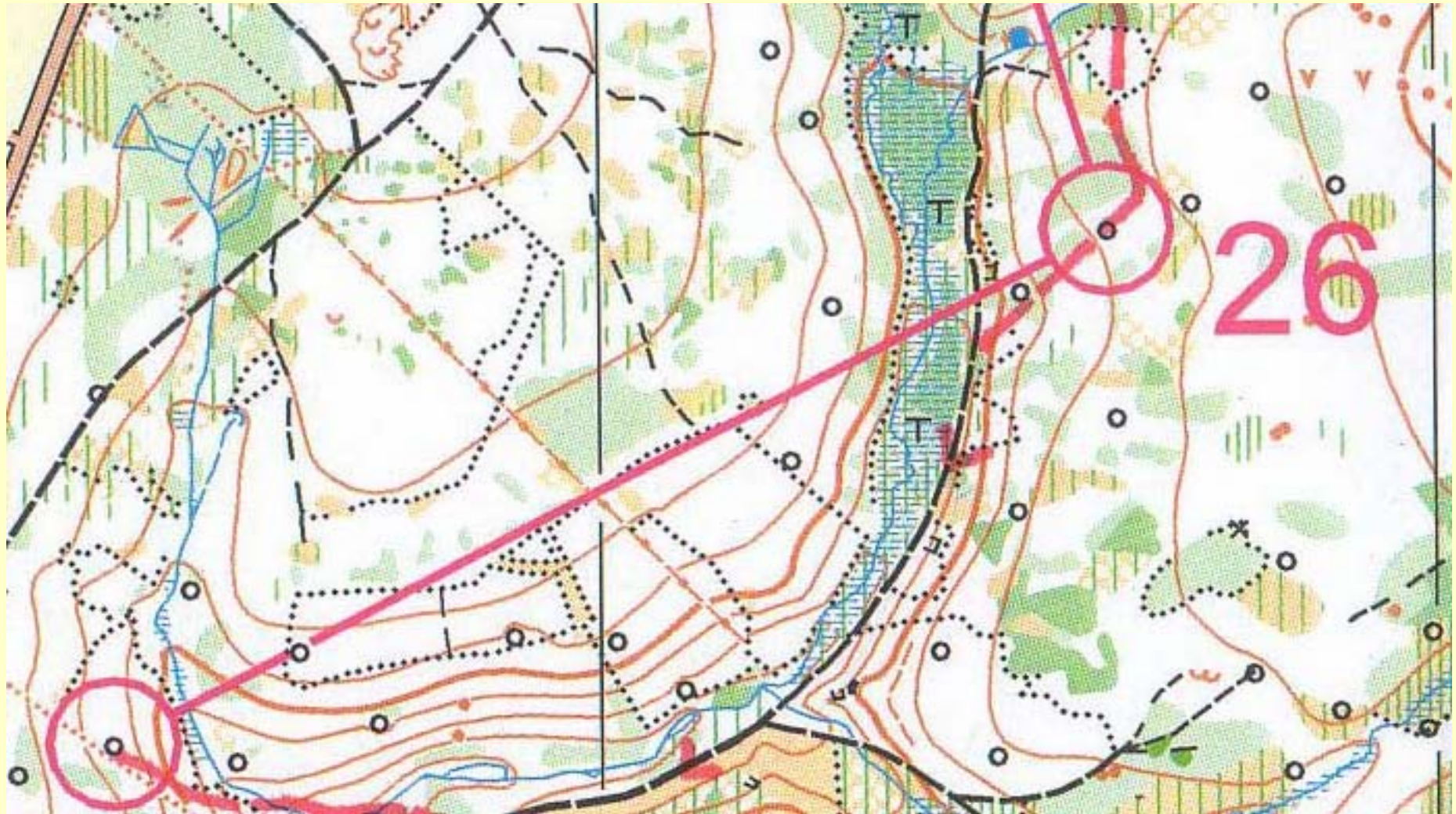
# Event1 – middle final (Belgium, 02.06.2002)

## La Rocaille – 1:15 000 / 5 m





# Event2 – long final (Belgium, 03.06.2002) Le Taillis des Prussiens – 1:15 000 / 5 m





# Event3 – sprint (Switzerland, 07.06.2002)

## Lausanne-Vidy – 1:4 000 / 2.5 m





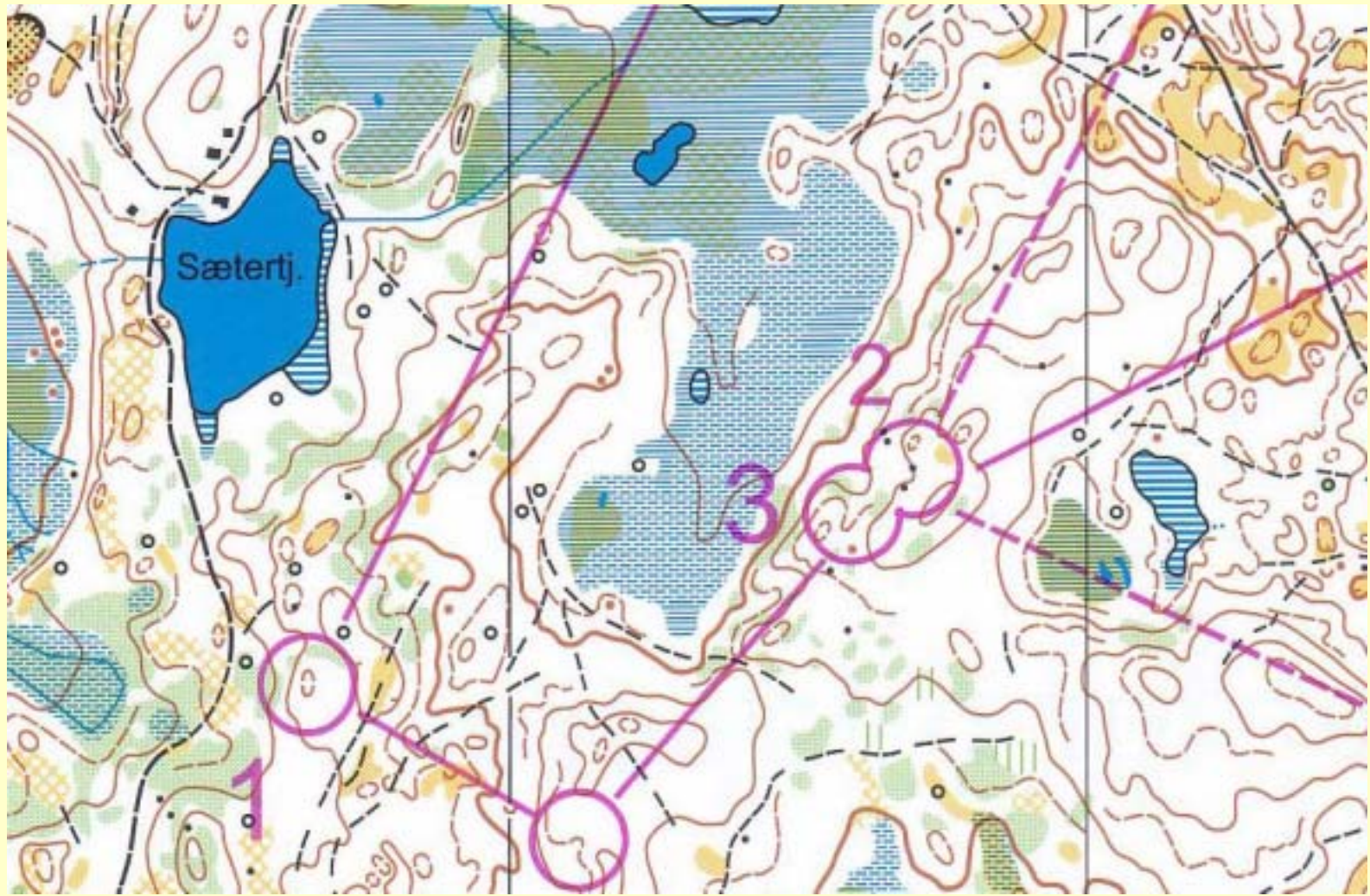
# Event6 – sprint (Norway, 30.06.2002)

## Roros sentrum – 1:5 000 / 5 m





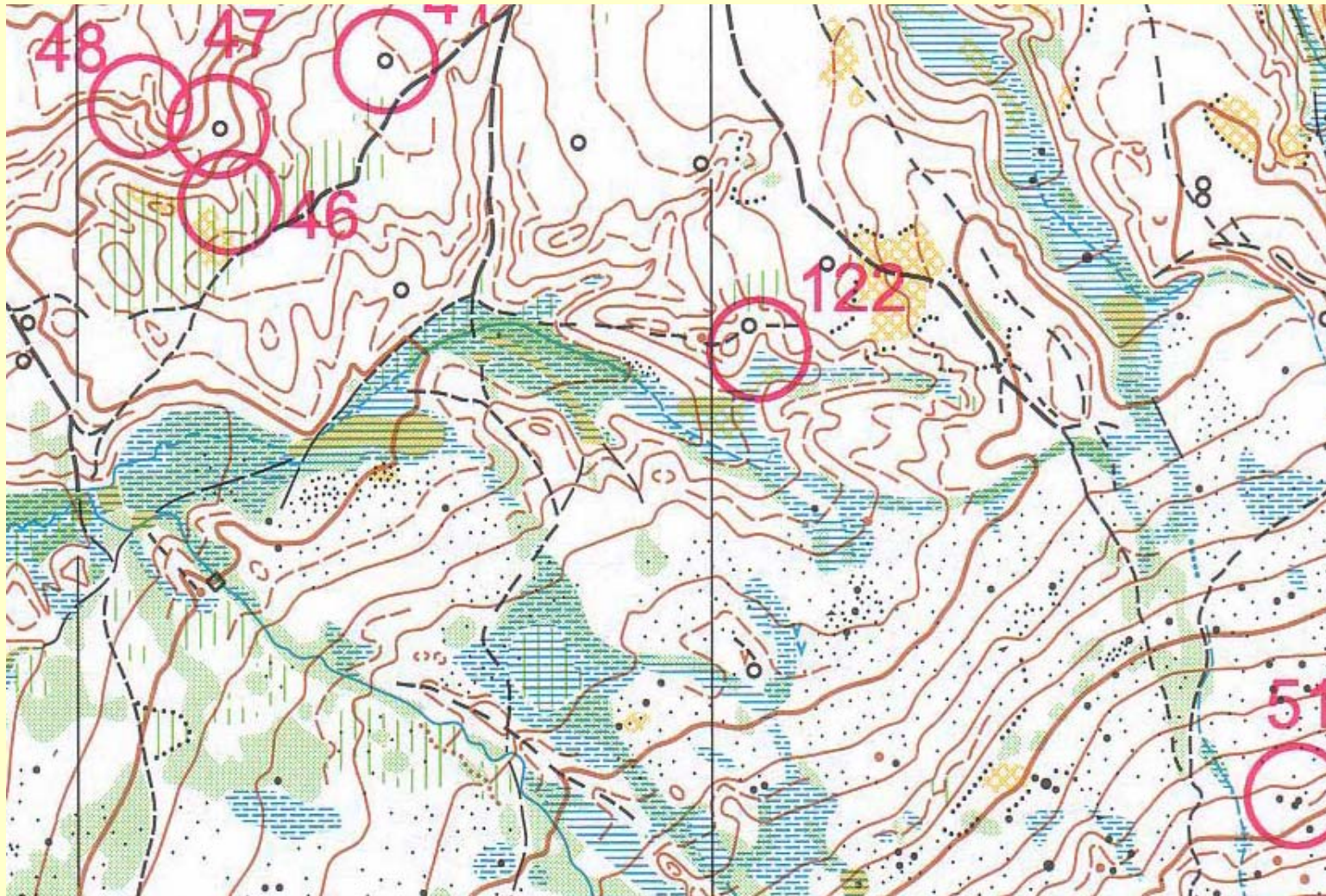
# Event7 – long (Norway, 01.07.2002) Havern – 1:15 000 / 5 m





# Event8 – relay (Norway, 03.07.2002)

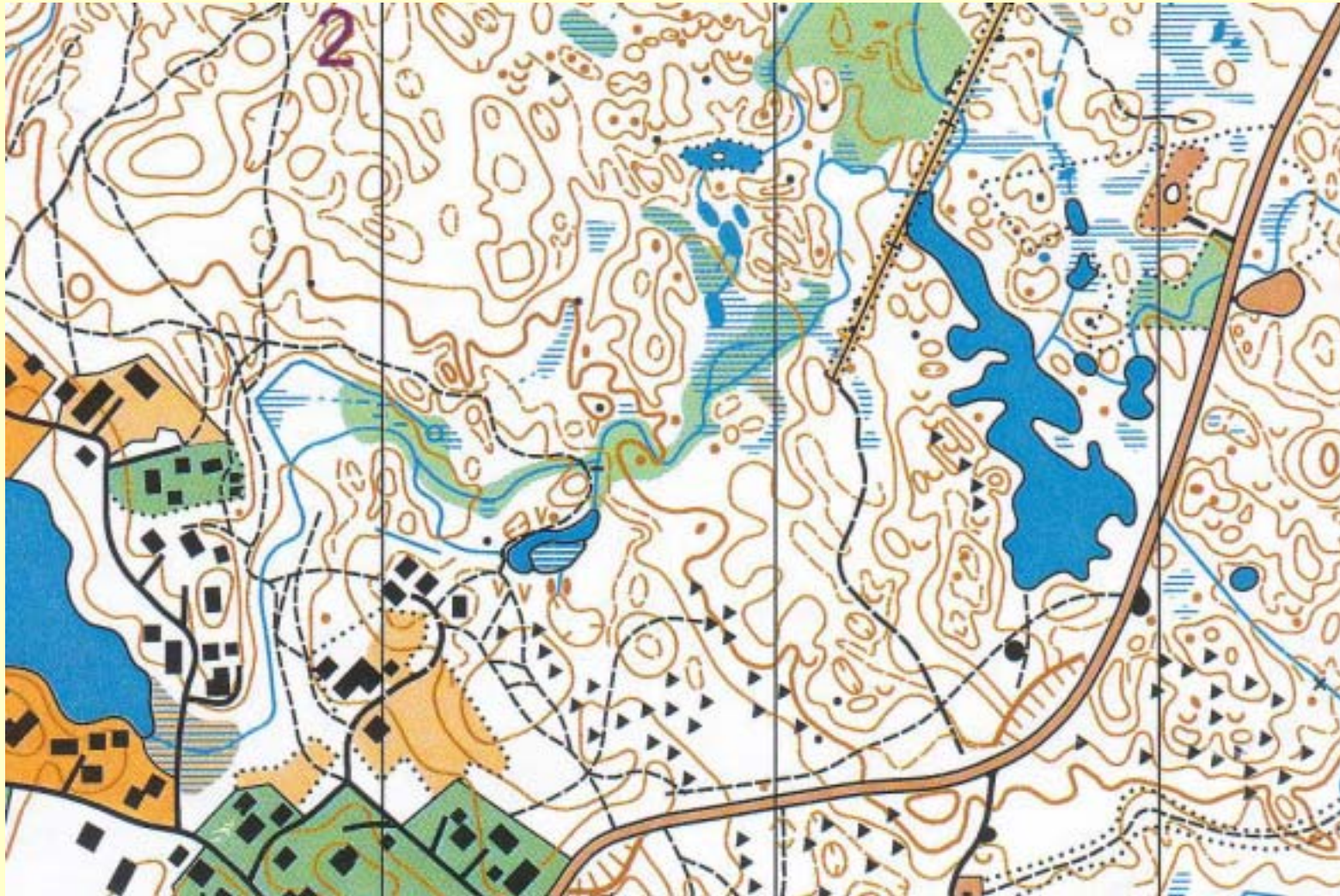
## Hummelfoten – 1:15 000 / 5 m





# Event9 – middle (Sweden, 05.07.2002)

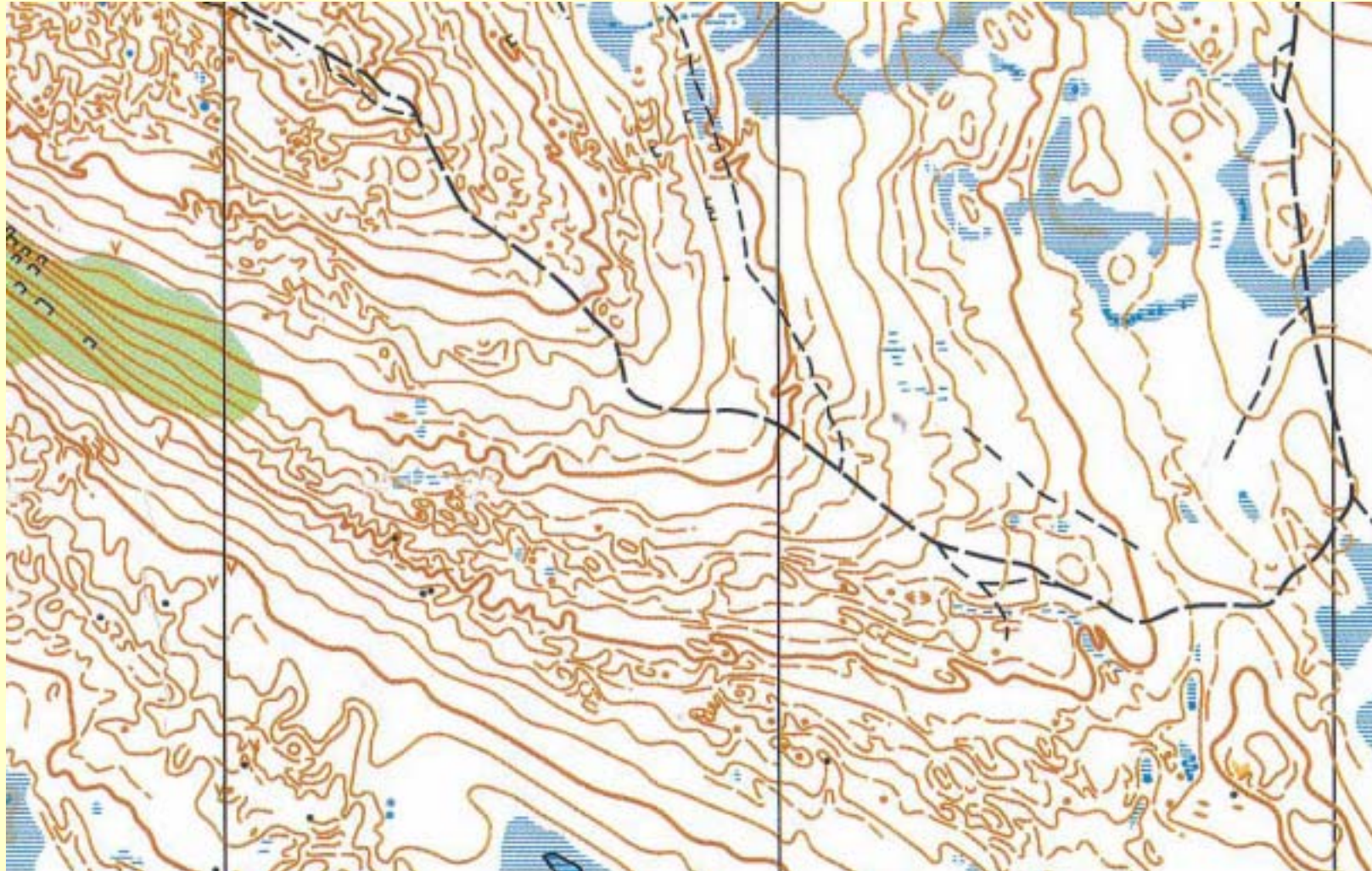
## Idre – 1:10 000 / 5 m



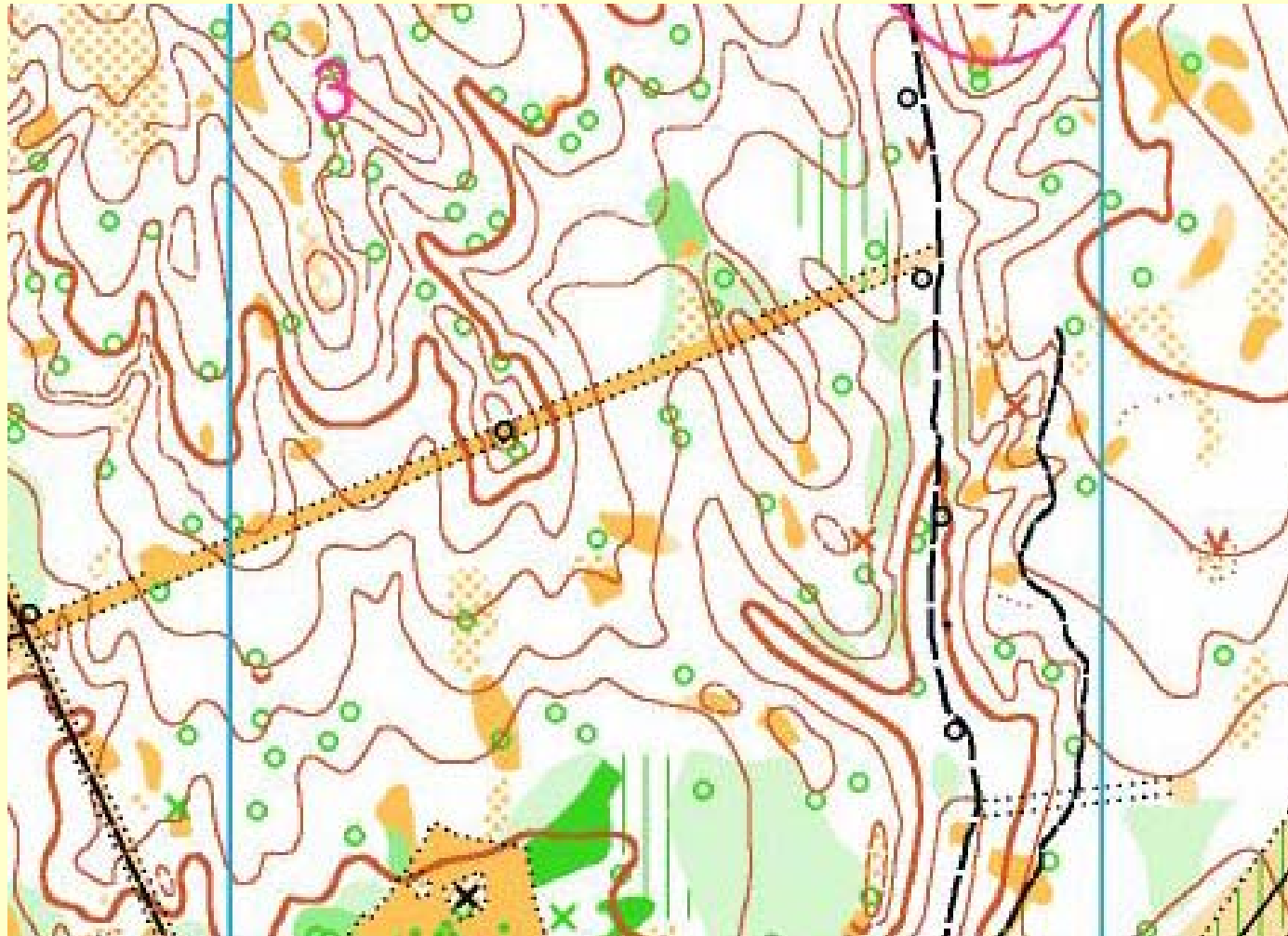


# Event10 – ultra long (Sweden, 07.07.2002)

## Slättvalen – 1:15 000 / 5 m



# Event11 – middle (Hungary, 25.09.2002) Uzsa-Egyesfa-tető – 1:10 000 / 5 m



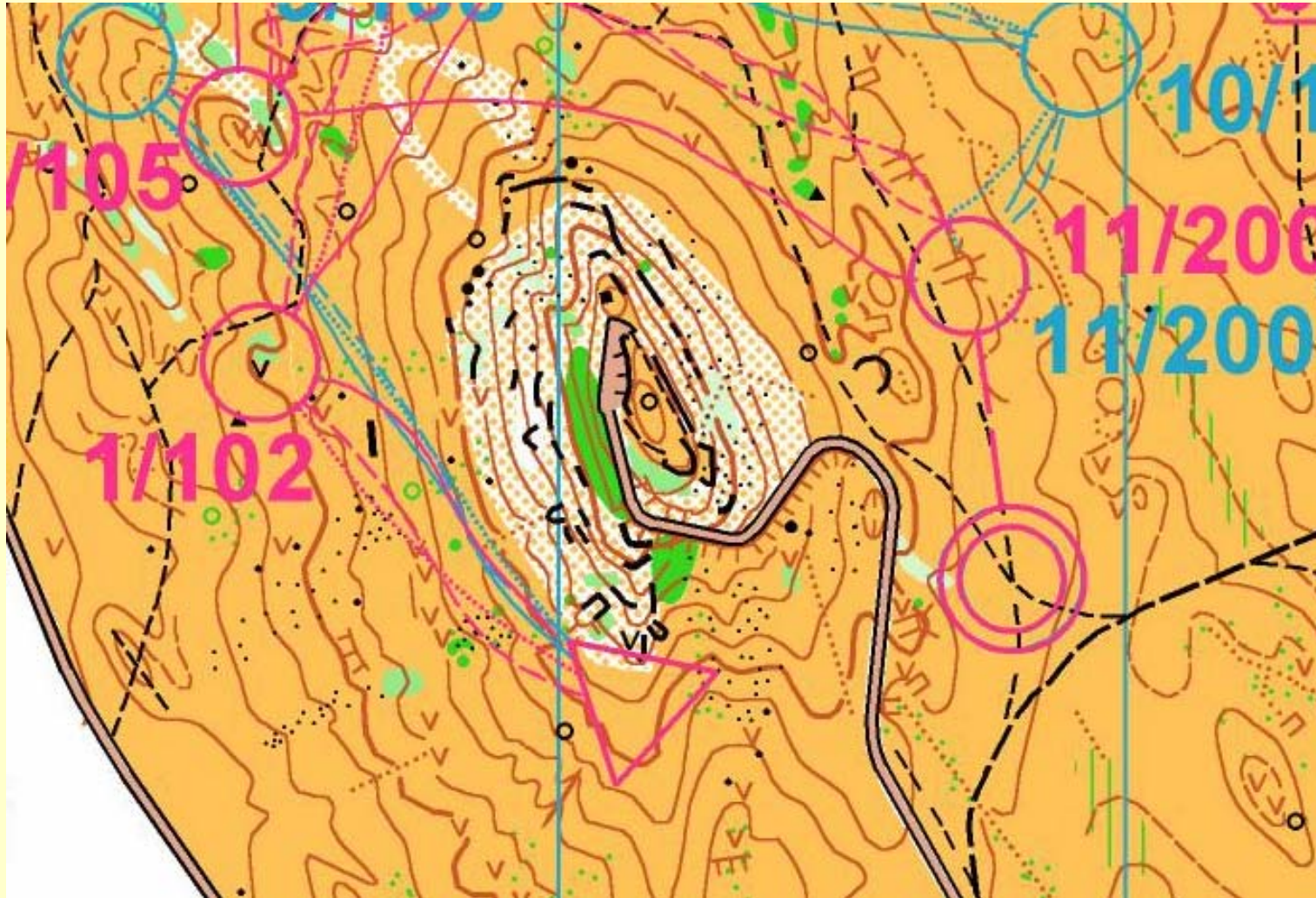


# Event12 – relay (Hungary, 26.09.2002) Kecskevár – 1:15 000 / 5 m



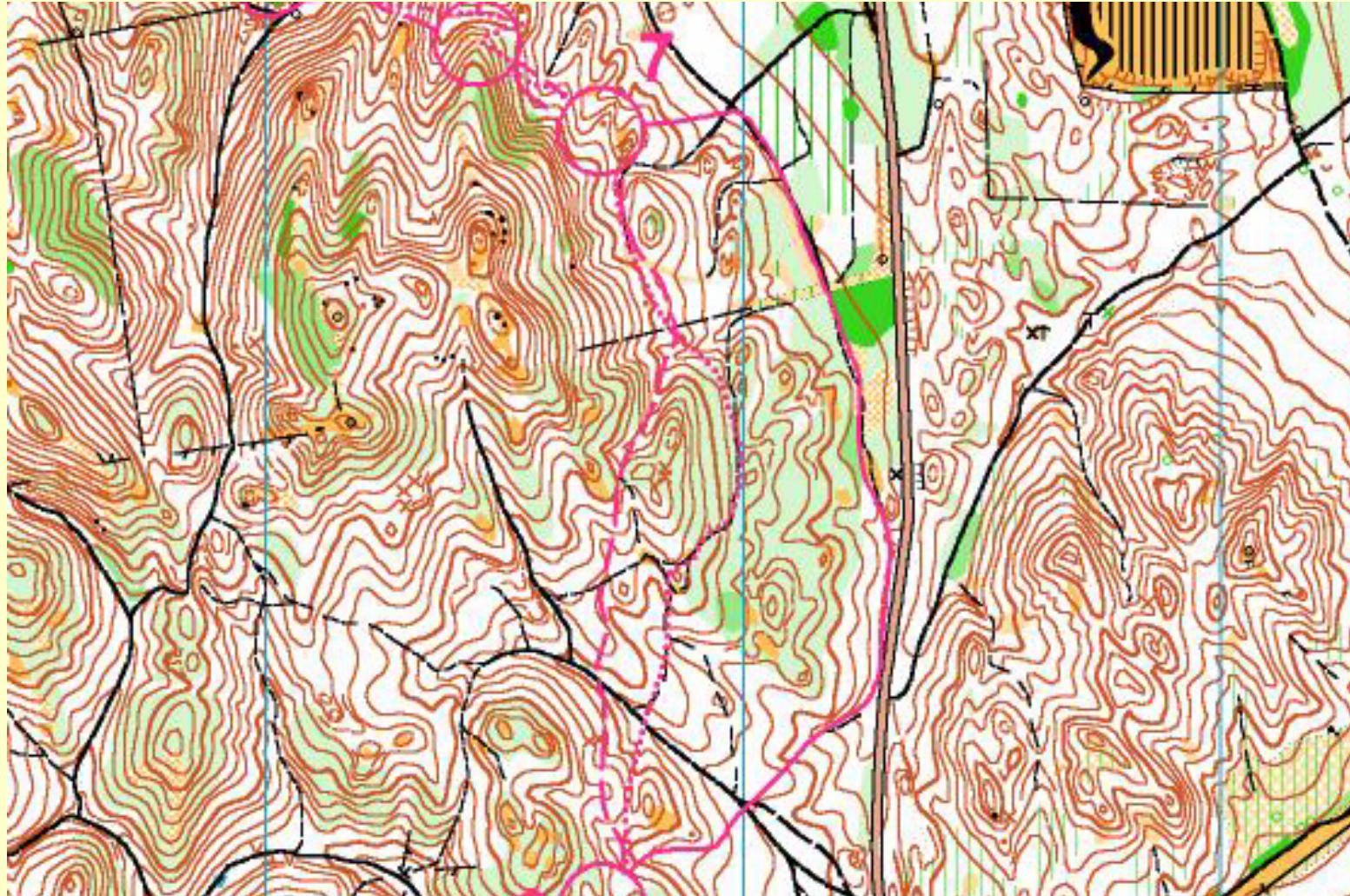


# Event13 – sprint (Hungary, 28.09.2002) Cseket-hegy (É) – 1:5 000 / 5 m





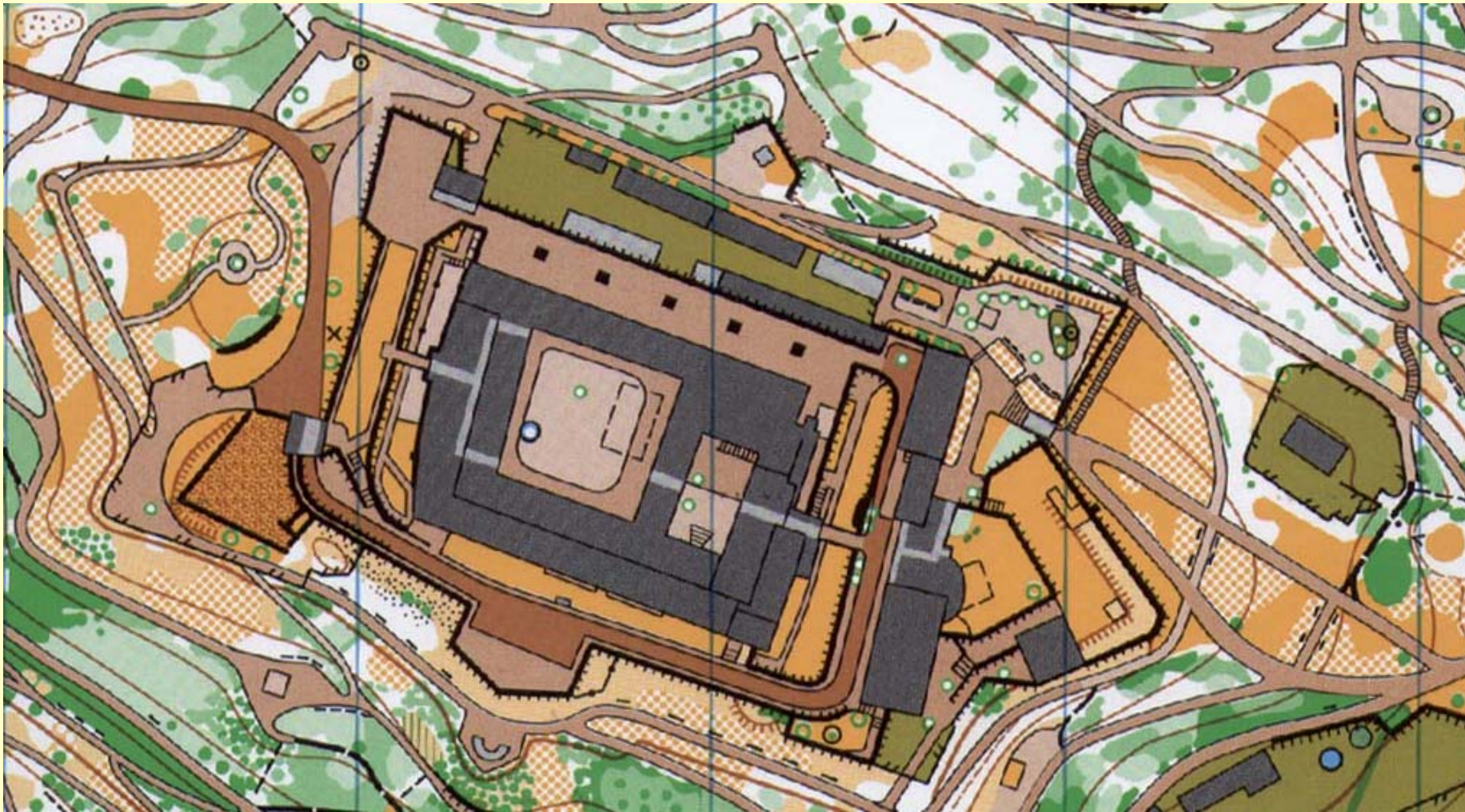
# Event14 – long (Hungary, 30.09.2002) Sátor-Magas (Tüskés-hegység) – 1:5 000 / 5 m





# Event15 – sprint (Czech Rep., 02.10.2002)

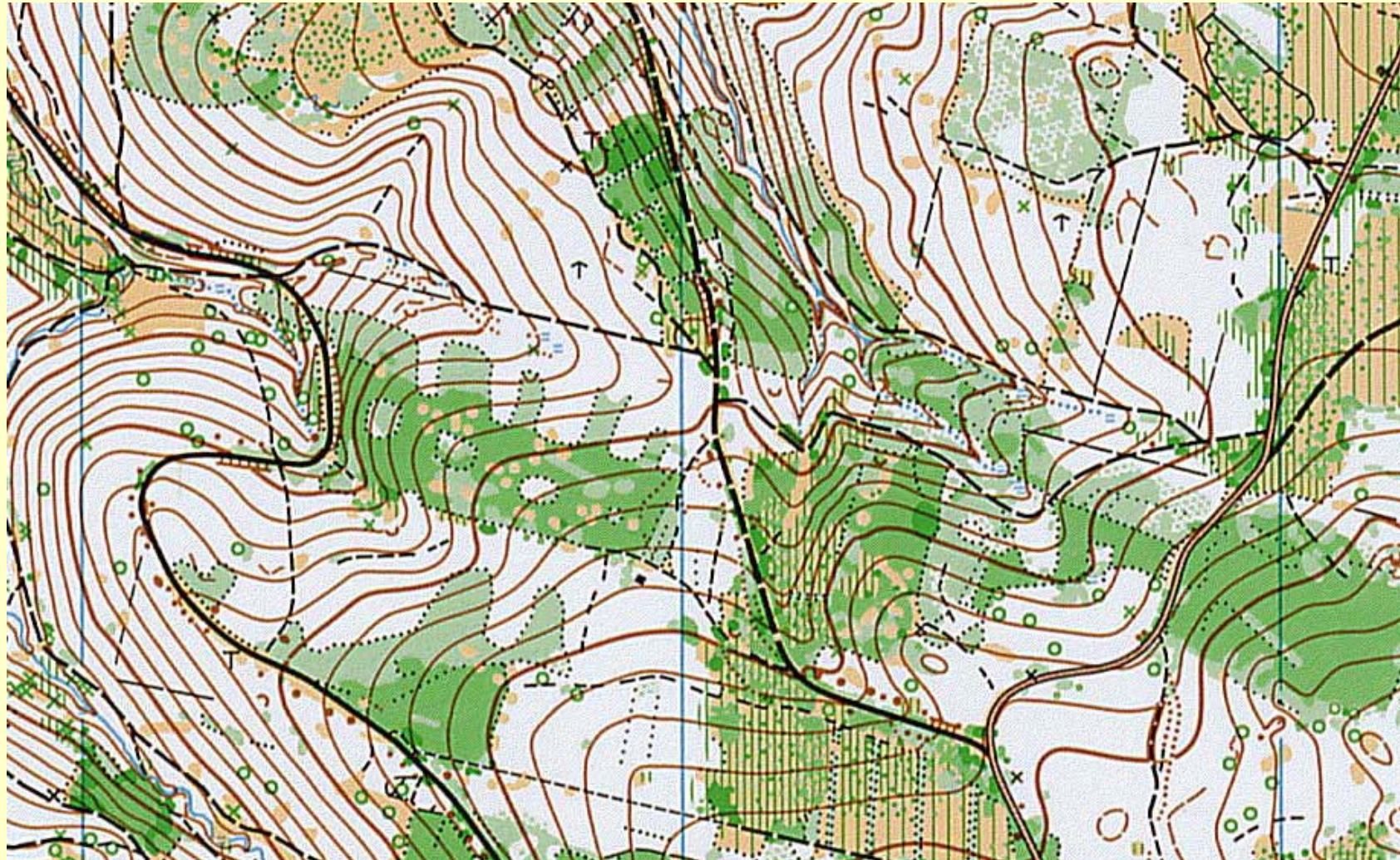
## Spilberk – 1:4 000 / 5 m





# Event16 – long (Czech Rep., 03.10.2002)

## Pohádka máje – 1:15 000 / 5 m





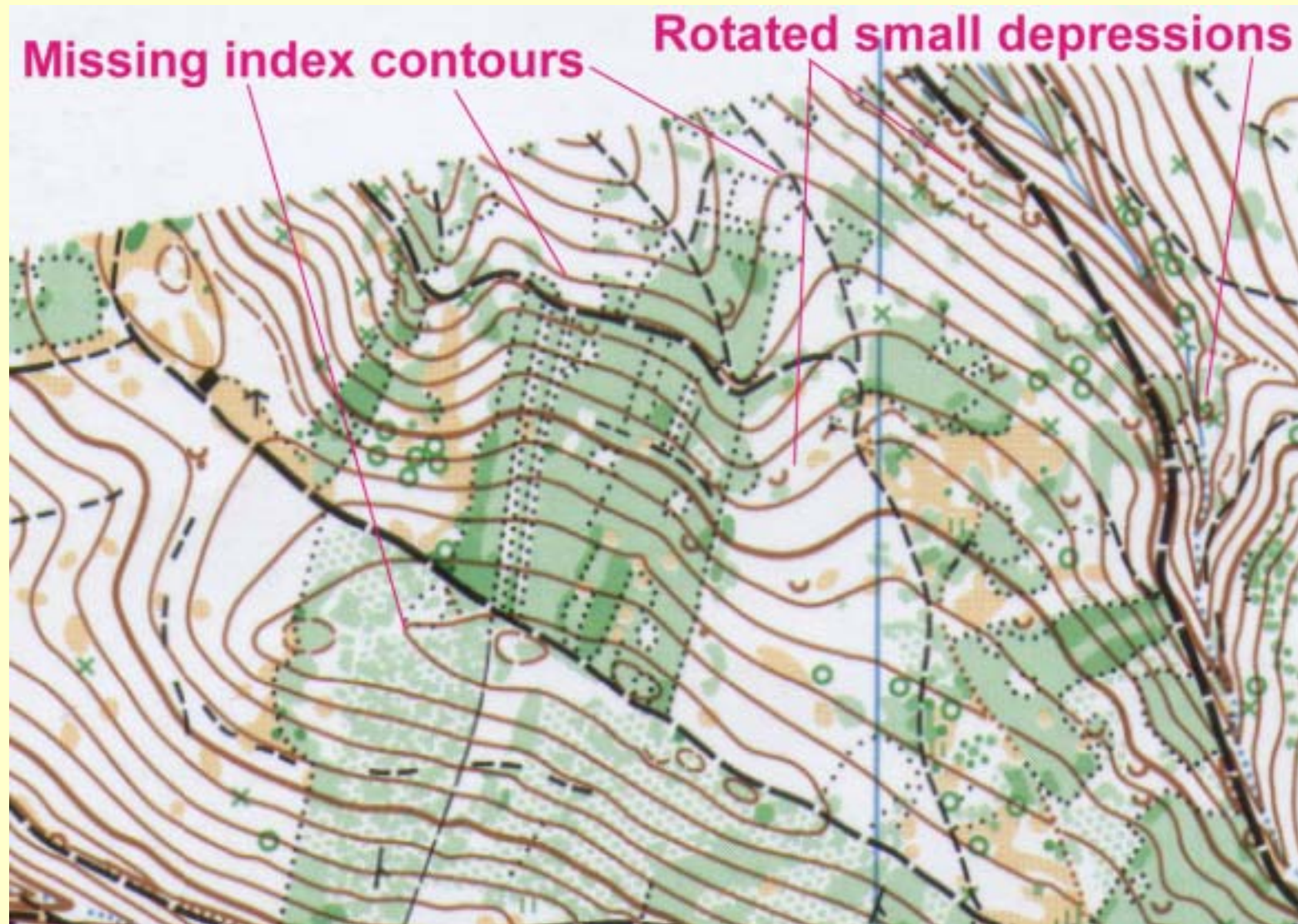
# Event17 – relay (Czech Rep., 05.10.2002)

## Krtiny – 1:10 000 / 5 m





# Mistakes

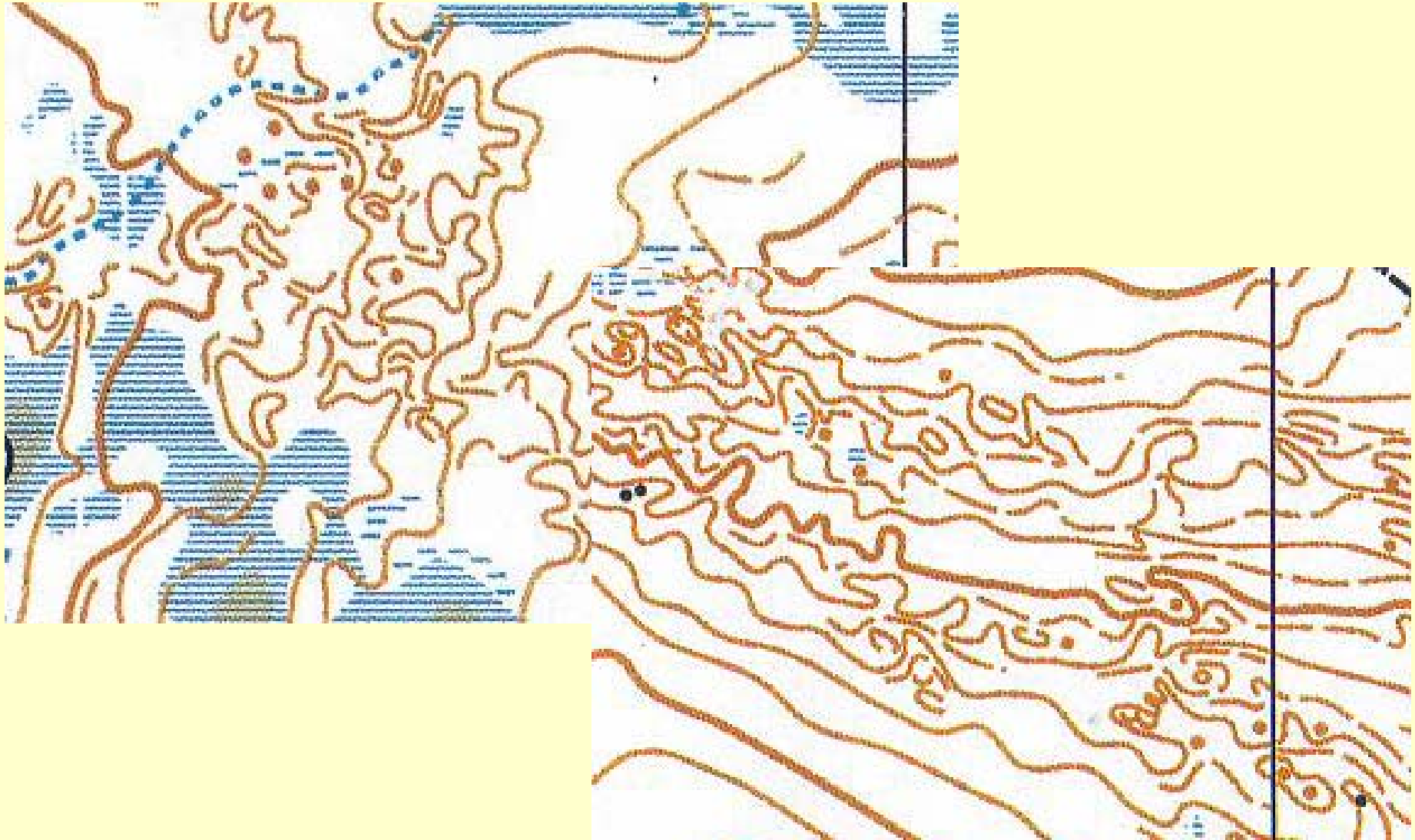


# Mistakes (missing index contour)

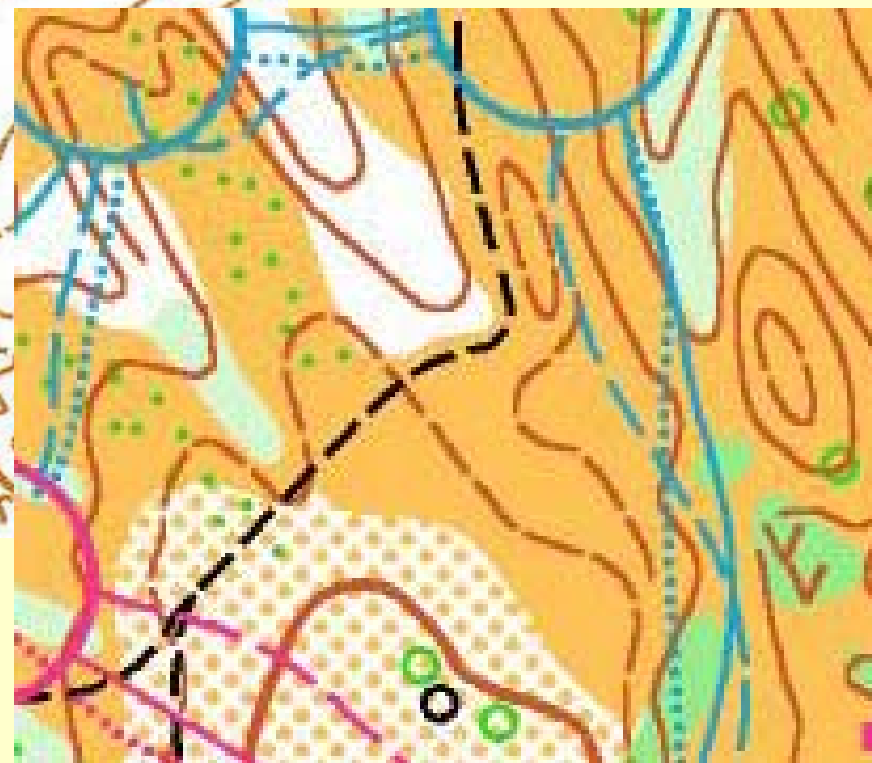
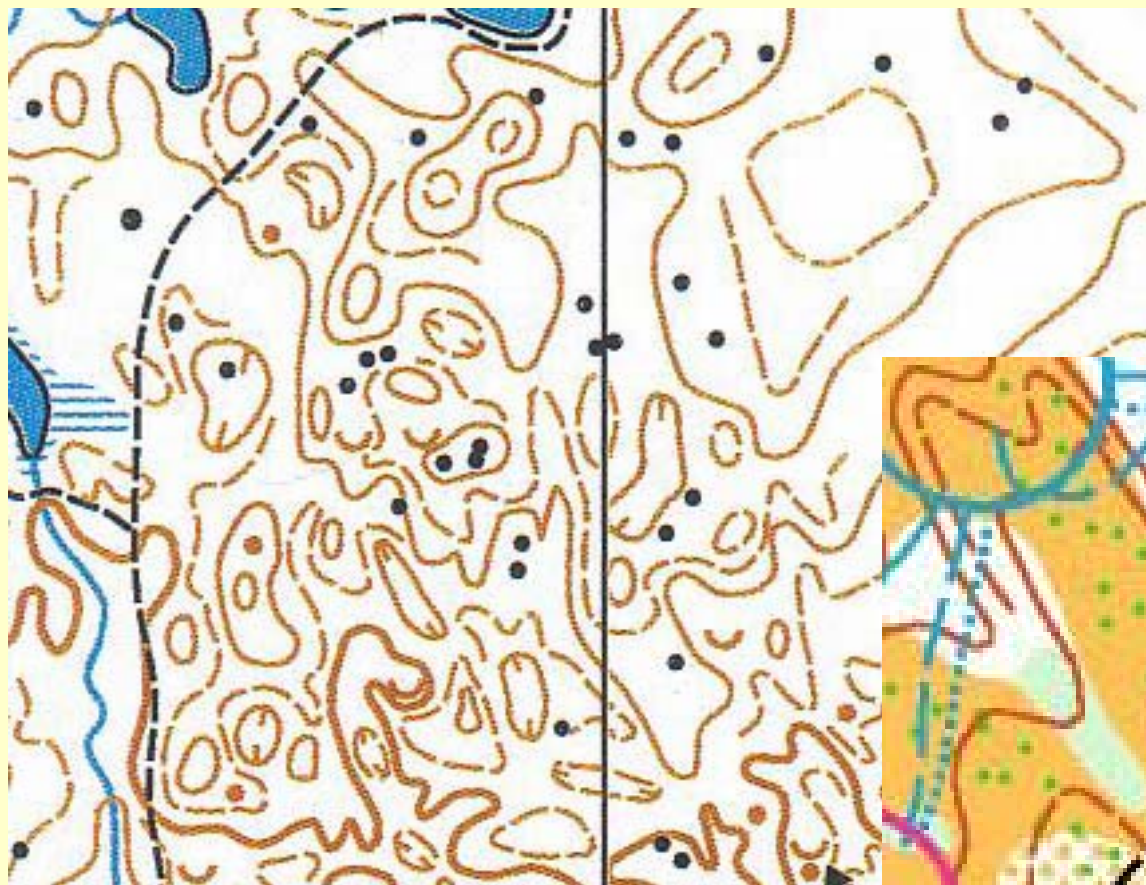




# Mistakes (too much form lines)

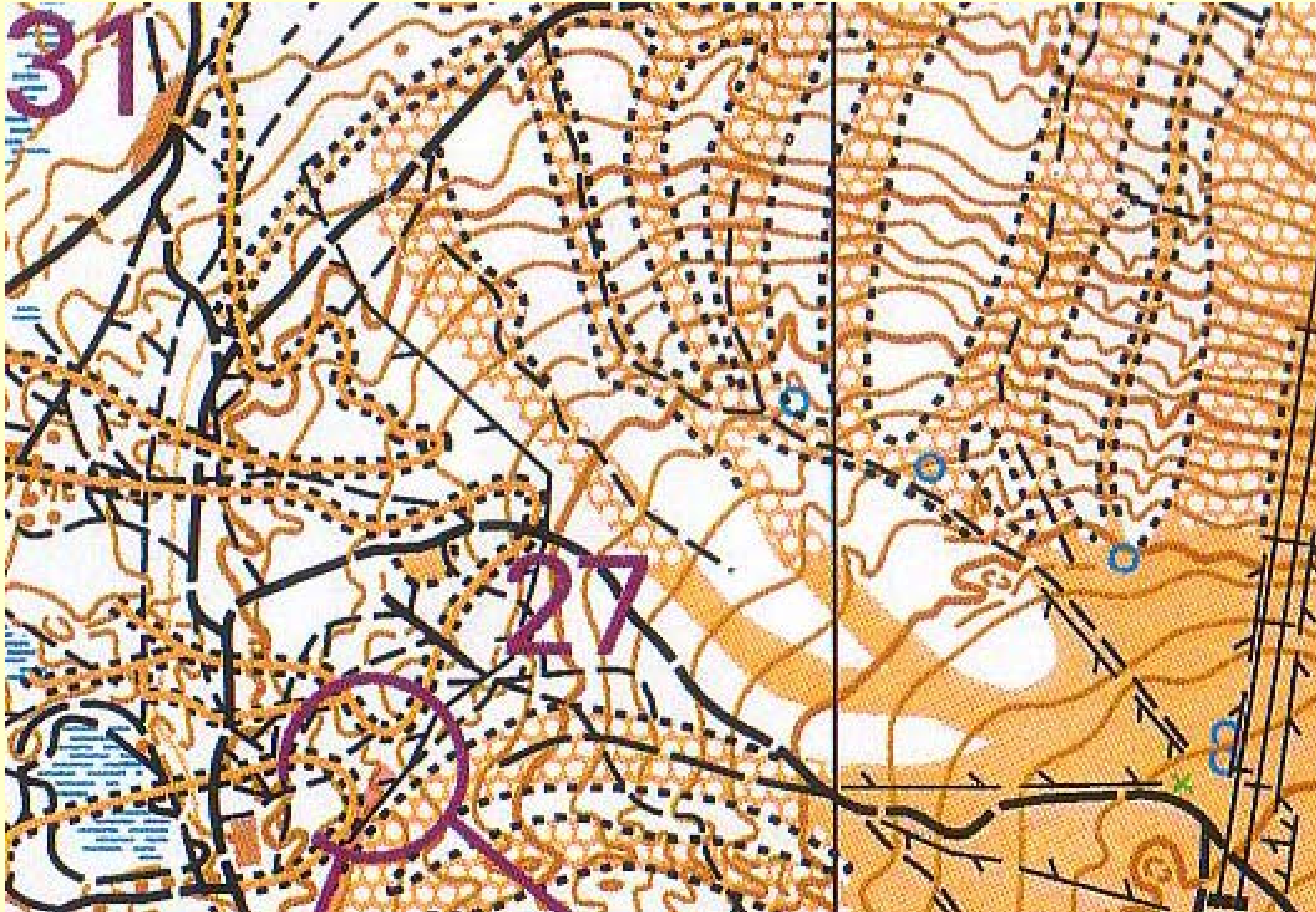


# Mistakes (too much form lines)





## Mistakes (deviation in size)



# Mistakes (knoll sizes)

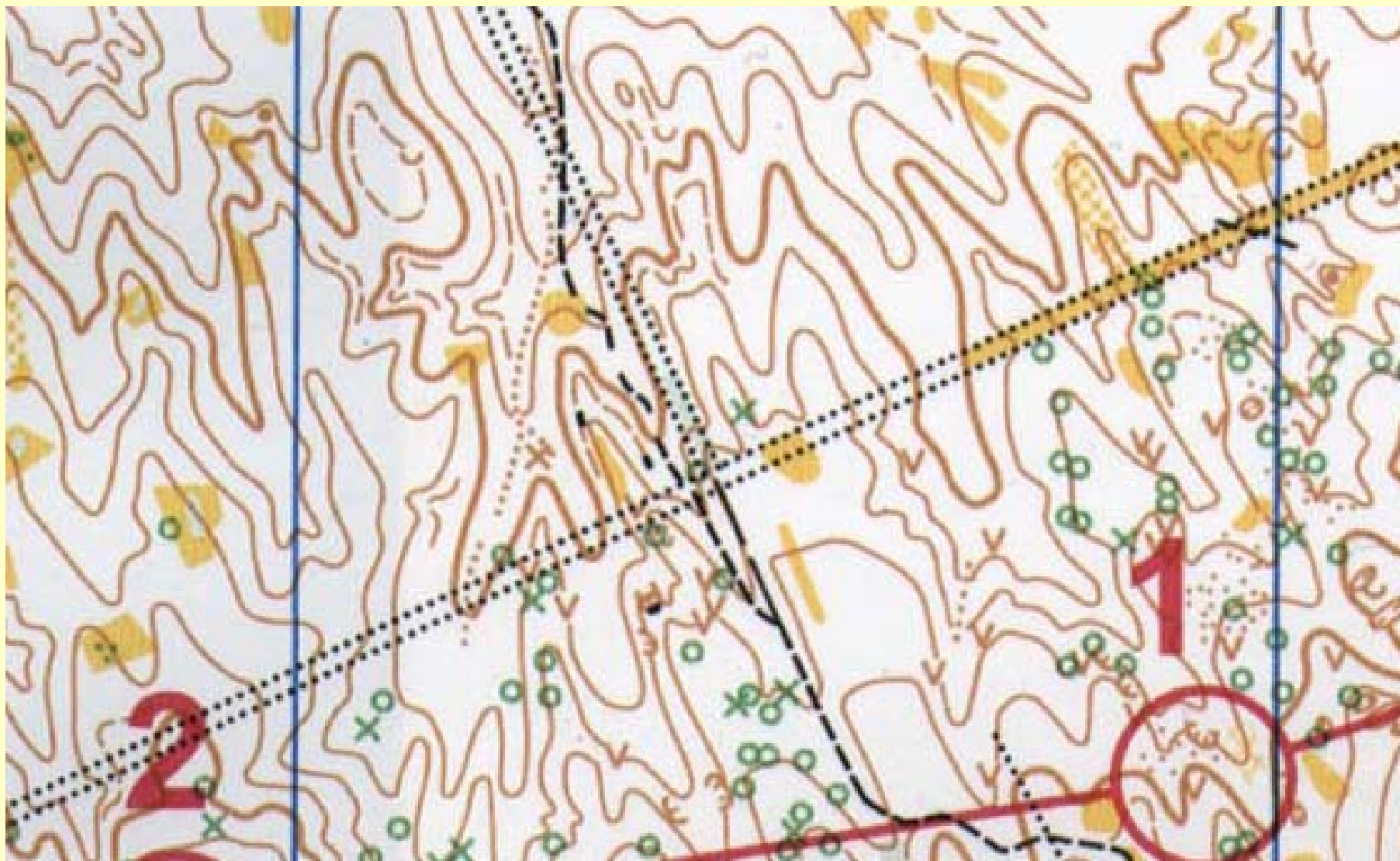




## Mistakes (short gullies, depressions)



# Mistakes (no slope lines)





# Conclusions

- **The proper scale is a key question, the importance will be emphasized in the competition rules (part of the discipline specification).**

**Drawing errors, improper representation may cause misinterpretation.**

**The reason of most of the drawing errors is the regardless usage of ISOM2000.**

**Sometimes the simple logical thinking is missing: point/line/area symbols.**

# **Dangers of the future 1**

**The organizers are keening on very detailed maps, larger scales (terrains look more detailed on the map then in the reality).**

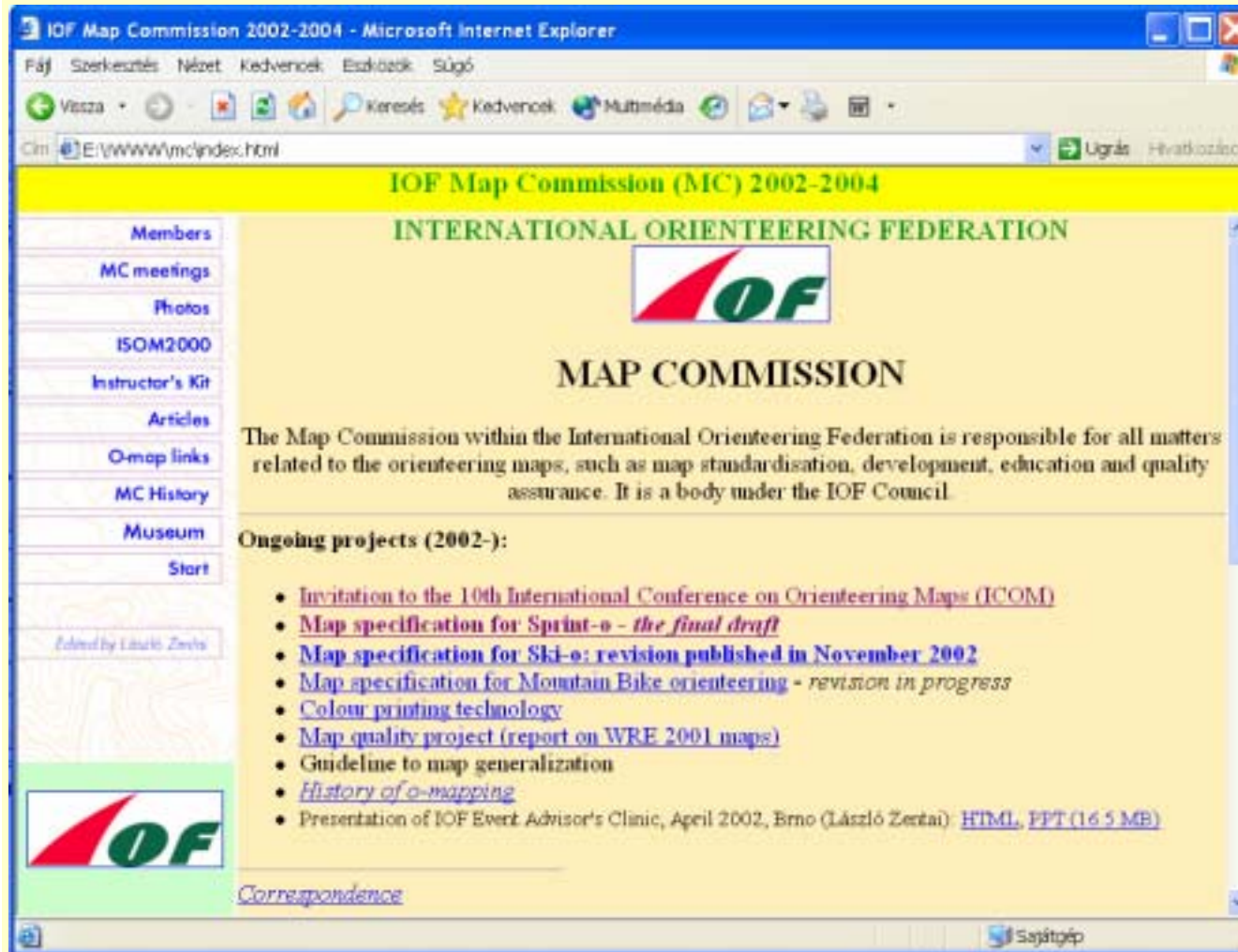
**ISSOM and ISOM2000 are different (the users tend to mix them).**

**The proper use of ISSOM requires more skills and attention.**

**Are there any sanction if the organizers break the rules? (Actually not.)**



# THE END



**László Zentai**  
**Map Commission**  
<http://lazarus.elte.hu/mc>